

# CONEXIONES

## *Foundation Courses*

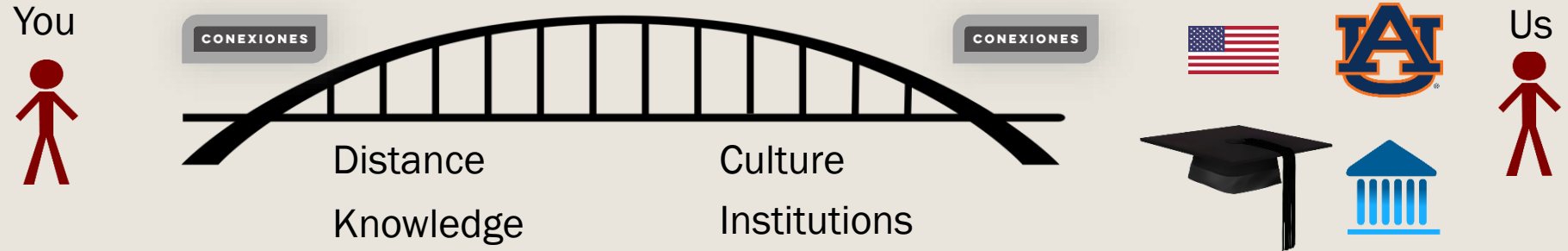
### *MODULE 1 – “INTRODUCTION: WHAT ARE MY OPTIONS?”*

---

# Welcome To Conexiones!

- By the end of today's course, you will:
  - *Clearly understand the purpose, structure, and expectations of the Conexiones program*
  - *Know a little about our founders and volunteers*
  - *Identify Good (and Bad) reasons to study in the US*
  - *Recognize the degree programs offered by U.S. higher education institutions*
  - *Understand basic information about U.S. degree programs*

# Our Mission – We Are A Bridge



## ■ Mission:

- *“Conexiones assists Latino students with achieving US-related educational goals”*
- *We are a bridge of knowledge between you and the opportunities you seek*

## ■ Why We Do It:

- *We believe in you!*
- *We want you to succeed!*
- *Some of us were in your position not long ago*

# Who We Are



- 3 Co-Founders
- 30+ Mentors (And Rapidly Growing!)
- 7 Branches
  - BYU – Provo
  - BYU – Idaho
  - LDS Business College
  - University of Utah
  - Arizona State University
  - Utah State University
  - Utah Valley University

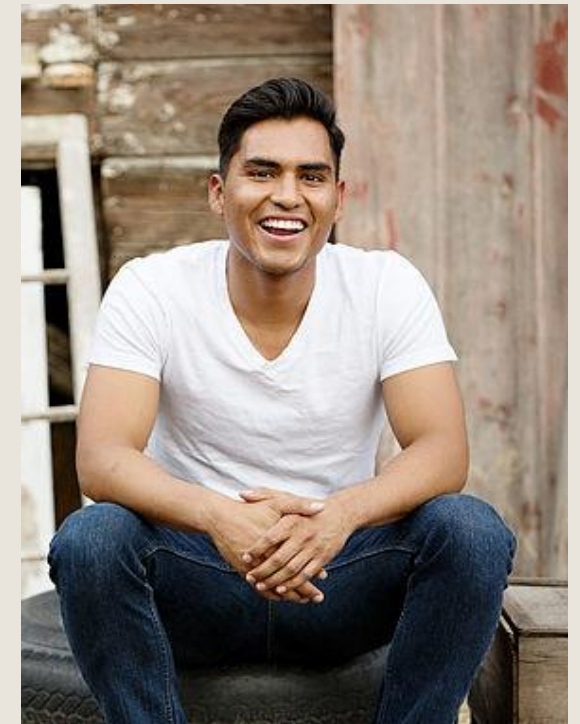
# Meet The Co-Founders



- Humberto Detrinidad
- Born in Nicaragua, moved to U.S. to study
- B.S. Mechanical Engineering



- Spencer Whitworth
- Raised in Los Angeles, lived in Spain for 2 years
- B.S. Finance

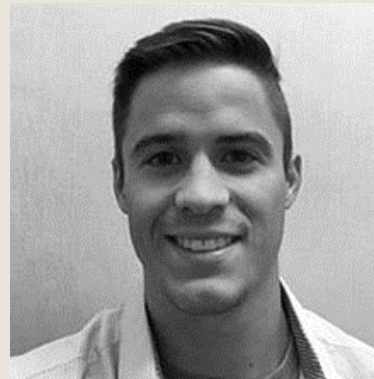


- Danny Rabanales
- Born in Guatemala, moved to US at age 16
- B.S. Finance

# Just a few of our 30+ mentors



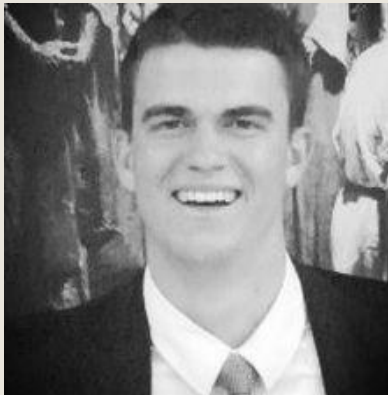
Joan Milan  
B.S. Pre – Med Studies



Jacob Church  
B.S. Exercise Science



Stephen Crandall  
B.S. Finance



Trent Oldroyd  
B.S. General Business



Meilani Milan  
B.S. Biology



Anthony Bivens  
B.S. Finance

# The Conexiones Program

- Two Parts

1. *The Foundation Courses*
2. *Mentor Services*

# Part 1: The Foundation Courses

- The Foundation Courses
  - *5 Modules of appx. 30 min. - 1 hour each*
  
- Modules
  1. Introduction: What Are My Options?
  2. The Education Experience
  3. Arranging My Experience
  4. Applying (Successfully) For Study
  5. Now What?
  
- Completing the Courses
  - *Final Exam*
    - ❖ (Multiple Choice, 25 Questions, 24/25 Passing Score, You can use presentations)
    - ❖ Exam Includes a Final assignment
      - *Provide Course Feedback*
      - *Write a Brief (100-Word Essay)*



# Part 2: Mentor Services

- *Your Mentor Will HELP YOU:*
  - Identify your options
  - Select an appropriate study program
  - Create a “Game Plan”
  - Identify which entrance exams you need to take
  - Apply for study
  - Understand the general steps to apply to a VISA
  - Find housing
  - Provide 1-2 Hours of Outside Research per week
  
- *Your Mentor WILL NOT:*
  - Take responsibility for financing your education
  - Take responsibility for your goals
  - Provide legal services
  - Serve as an English or Academic Tutor
  - Assume service obligations once you come to the USA



# Mentor Service Policies

- We provide valuable assistance free of charge - respect the services we offer and don't offer
- We don't guarantee you will come to the U.S. - ultimately, you are in charge of that!
- Inappropriate behavior will not be tolerated:
  - *Sexually Suggestive Conduct*
  - *Unwanted Romantic Advances*
  - *Soliciting Money*
  - *Making mentors feel that if you don't succeed, it's their fault*
  - *Pressuring mentors for help beyond their 2 hour/week time commitment*
- How we treat inappropriate behavior:
  - *Mentors will report conduct to central office.*
  - *Leadership will decide whether to issue a warning or to remove individual from program*

# Mentor Service Policies

- Our advice is just that – advice!
  - *We are not lawyers, bankers, immigration officers or admissions officers!*
  - *We are university students*
- Weekly 30-60 minute counseling appointments
- 4 appointments are guaranteed, further service depends on your effort/progress
- For any mentor issues, please contact [conexiones.ayuda@gmail.com](mailto:conexiones.ayuda@gmail.com)
  - *Our goal: positive experiences for mentors and students!*
- Expectations
  - *Mentors Will:*
    - Plan For Each Appointment
    - Provide 24-hour notice when they cannot attend an appointment
  - *Students Will:*
    - Complete tasks/research assigned by mentor (up to 5 hours/week)
    - Provide 24-hour notice when they cannot attend an appointment

# Cancelling/Missed Appointments

- If you provide 24-hours notice:
  - *Your Mentor will set another time for that week's appointment*
- If you do not provide 24-hours notice:
  - *1<sup>st</sup> time: Warning; That week's appointment will be canceled; Meet next week*
  - *2<sup>nd</sup> time: Warning; That week's appointment will be canceled; Meet next week*
  - *3<sup>rd</sup> time: Removal from Mentor Services*

# Other Introductory Topics

- Ideas? Concerns? Suggestions?
  - *We would love to hear them!*
  - *Conexiones.ayuda@gmail.com*
  
- Help us grow – spread the word!
  - *Facebook/WhatsApp*
  - *Friends/Family*
  - *Church/Community Leaders*

# Let's Get Started!

# Study in the US – Should I Do It?

- Biggest myths about U.S. study
- Myth #1: Student of non-western countries are not welcome in the US – False,
- Myth #2: Students at American universities party and have too much fun
- Myth #3: American culture is too loose and secular and has no room for religious convictions
- Myth #4: Only white aristocratic people attend college – false, Most programs want international students, Many international students receive financial help and come from diverse backgrounds
- Myth #5: USA Universities are too hard – While it is true they are hard, they are not impossible if you work hard enough
- Myth #7: I'm not a good enough candidate for college– false. You are always a great candidate for higher education, even if it is not in the US

# Reasons for U.S. Study – Good and Bad

## Good



- You want to work in the U.S. after studying
- You want to bring specific skills back to your home country
- Your desired study program does not exist in your home country

## Bad



- You want to work in the U.S. while studying
- You want “opportunities,” but don’t have plans
- You want to leave your home country
- A friend/family member studies in the U.S.
- You like American culture



## Reasons for U.S. Study – Good and Bad (Cont.)

### Good



- You cannot obtain your career goals without a U.S. study program
- You want internship opportunities
- You want to improve English skills

### Bad



- You want easier classes
- The U.S. appears exciting
- You don't know how study fits in with your career, but you've heard U.S. programs are all top-quality

# Studying in the USA - Decisions

- To study in the USA, you must decide:
  1. *What degree/ study program am I looking for?*
  2. *Which type of educational institution is right for me?*

# Which Degree/Study Program is Right For Me?

- English Study Programs

- *English Language Centers*
- *Pathway*

- Degree Programs

- *Doctorate Degree (PhD)*
- *Other Degrees (MBA, JD, MD)*
- *Masters Degree (Msc, M.S., M.A.)*
- *Bachelor's Degree (Bsc, B.S., B.A.)*
- *High School Degree*



*Difficulty*  
*Prestige*  
*Opportunities*

- Certification Programs

- *Trade/Technical School*

# BYU English Language Center - ELC

- The ELC is an excellent institution to learn English.
- The ELC helps prepare students to pass the TOEFL
  - *The TOEFL is a requirement in order to apply to many USA Universities*

# Program Description

- 4 classes per day; Each class lasts 1 hour
- Writing, Listening, Speaking, Reading, and Linguistic accuracy
- The first two classes run from 8:15 - 10:35 in the morning
- The second block of classes runs from 12:15 - 2:35 in the afternoon

# ELC - Requirements

- Be at least 17 years old
- Have graduated from high school
- Copy of your high school graduation certificate
  - *You must include a copy of your informal transcript if your graduation certificate is in Spanish*
- Ecclesiastical recommendation ([endorse.byu.edu](https://endorse.byu.edu))

# ELC –Statement of Finances

- The ELC requires applicants to demonstrate a sound financial situation
  - *You must send in a bank record demonstrating that you hold at least:*
  - *\$5,800 if you plan to apply for one semester*
  - *\$11,600 dollars if you plan to apply for two semesters*

\*If the applicant does not have sufficient funds, he/she can ask help from a sponsor.

\*\*This sponsor can be a relative or friend. The sponsor must complete a Form of Sponsorship Consent

# ELC - Cost

- \$2500 per semester
- Book cost: about \$200
  - *This could vary; normally students sell used books at a significant discount*
- Health Insurance (required) \$296



# Begin Your Application Process!

<http://elc.byu.edu>

The screenshot displays the BYU English Language Center website. The header includes the BYU logo and navigation links: Logout, Search ELC Website, and a search icon. The main navigation bar lists: Future Students, Students, Teachers, Testing, Expect Excellence, and Research. A dropdown menu for 'Future Students' is open, showing options: Information, Program Information, Our Campus, Visa and Other Information, Apply to the ELC (highlighted), and Contact Us. Below this, there are links for 'Brochures in Other Languages' in various languages including Japanese, Korean, Chinese, Portuguese, Russian, and Spanish.

The main content area is titled 'How to Apply' and contains the following text:

To be eligible to attend the ELC, students must be 17 years of age by the first day of the semester and have graduated from high school (or the equivalent of 12th grade in the US) by the application deadline.

To apply to the ELC, first complete the online application. [Click here to begin the application process.](#)

After you have completed the online portion of the application, you will need to mail several documents to us in order to complete the application process. [Click here to see what those documents are.](#)

If you have any questions about the application process, or if for any reason you are unable to complete the online application, please [email us](#) and we will assist you.

[< Previous Page](#)

The footer contains several columns of links:

- Future Students:** Email, Contact Us, Program, Fees, Dates, Application
- Students:** ELC Canvas, Schedule a Tutor, Study Buddy Sign-up
- Teachers:** Staff Directory, Scheduler, ELC Reading List, Create/Edit Your Biography
- Web Resources for Teachers:** Writing Calibration, Writing Handbook, LAT Speaking Rubric
- Follow:** BYU, ELC, twitter.com/byu, BYU News, ELC

At the bottom, there are links to other BYU locations: BYU-Idaho, BYU-Hawaii, LDS Business College, Salt Lake Center, Jerusalem Center, and Missionary Training Center. The footer also includes the URL [c.byu.edu/prospstudent/brochure/brochure3.php](http://c.byu.edu/prospstudent/brochure/brochure3.php) and the text 'The Church of Jesus Christ of Latter-day Saints'.

# Pathway

- Online courses that help prepare students for University
- Benefits:
  - *School credits that can transfer to BYU - Idaho*
  - *Strengthen English Abilities*
    - Weekly conversations with natives
    - Academic courses
- Duration: One year (3 semesters)

Pathway  
IN PARTNERSHIP WITH BYU-IDAHO

- Weekly meetings at Institute Centers
  - English Courses
  - Religion Courses

### THURSDAY NIGHT GATHERING SCHEDULE

	Age 18–30	Age 31+
Academic Gathering	90 minutes	90 minutes
Religion Gathering	90 minutes <i>(institute)</i>	N/A
<b>TOTAL Gathering Time</b>	<b>3 hours</b>	<b>1½ hours</b>



#### ACADEMIC COURSES

##### All Ages

Life Skills and English

Basic Writing and English

Intro to Algebra & Personal Finance and English



#### RELIGION COURSES

##### Age 18–30

Institute Course

Institute Course

Institute Course

##### Age 31+

None. Age 31+ students in Pathway's L Version do not take religion courses.

- Each week, for 30 minutes, Pathway students speak with a native English speaker via Skype.
- Conversations help students practice English and gain confidence in speaking.



Pathway  
IN PARTNERSHIP WITH BYU-IDAHO

# Cost

- Costs vary according to country of the applicant.
- Find detailed cost information here:

<https://pathway.lds.org/Main/CostCalculator?language=True>

Pathway  
IN PARTNERSHIP WITH BYU-IDAHO

# Pathway - Points to Consider

- In order to apply to BYU – Idaho once you finish the Pathway program, you must gain a 3.0 GPA or higher
- This equates to a “B” average



# Begin Your Application Process!

<https://pathway.lds.org/Main/Join>



## APPLY TO PATHWAY

Applying to Pathway is simple. Follow these steps to start your journey today.

### 1 LDS Account

In order to apply to Pathway, you will need an LDS Account. Please select one of the following options:

▶ I HAVE AN LDS ACCOUNT

▶ I DO NOT HAVE AN LDS ACCOUNT

▶ I MIGHT HAVE AN LDS ACCOUNT — I'M NOT SURE

### 2 Select a Pathway Location & Apply

Pathway is available in hundreds of locations worldwide. Follow these steps to submit an application:

- Search for a **Pathway location** near you.
- Click the Pathway location you want to apply to.

*If the location is currently accepting applications, you will see a blue "Apply" button.*

*If the location is not accepting applications, contact the Pathway missionaries listed on the page to find out the next available start date.*

+ An ecclesiastical endorsement is required at the end of Pathway for those students who choose to pursue a degree through BYU-Idaho online or on campus.

# High School Degree

- **Description:**
  - *Also called “Diploma”*
  - *General Studies – You do not specialize!*
  - *Most basic degree available; required for all other programs*
  - *Same as “La Escuela Secundaria”*
  
- **Length:**
  - *Appx. 1 year – 18 months*
  
- **Requirements:**
  - *Basic History, English, Mathematics, and Science Classes*
  
- **Employment Relevance:**
  - *Won’t provide opportunities on its own*
  - *Treat this as a “Carrera Para Comenzar”*
  - *Provides time to adjust to the USA and prepare for college*



# BS/BSc/BA – Bachelor's Degree

## ■ Description:

- *Standard Academic Degree*
- *Requires you to specialize (BS Finance, BA History, Bsc Engineering, etc.)*
- *Referred to as an “undergraduate” degree*

## ■ Length:

- *Appx. 4 years*
- *Appx. 5 classes/semester (lectures are held about 2 times/week)*

## ■ Requirements:

- *SAT/ACT Exam ; TOEFL*
- *High School Diploma*
- *Each degree has its own list of required classes*
- *Some degrees require more classes than others*
- *You can find degree requirements in a **University Catalog** or **Department Website***

## ■ Employment Relevance:

- *A bachelor's degree opens many job opportunities*
- *International students must find employers willing to sponsor their visas*
- *The number/quality of opportunities available depend on your degree area*
- **Careful!:** *Make sure you understand the employment options related to your degree before committing*
- **Careful!:** *Make sure that companies know you are an international student!*

# Bachelor's Degree - Minors

## ■ Description:

- *Not required for a Bachelor's Degree*
- *Recognizes extra study in an area outside of your degree*
  - *Example BS Finance, Minor in English*
- *Provides a chance to explore other disciplines*

## ■ Length:

- *Appx. 1 year*

## ■ Employment Relevance:

- *Minors normally don't make a large difference in employment*
- *Some jobs look for specific language, business, or computer skills*
  - *Minors can help you gain these skills even if your degree is unrelated*

# Bachelor's Degree: University Catalog

catalog.iastate.edu/undergraduatemajors-alpha/

Library: Sign in | Adobe PDF Services | Sharing - Dropbox | Databases | HBLL | My Courses | Wall Street | Office365 Conexiones | PE/IB Recruiting | Pay.gov - My Account | Start a Nonprofit in Iowa | My Library | Relationship | Africa/LatAm

**IOWA STATE UNIVERSITY**  
Courses and Programs (2016–2017 Catalog)

SCHEDULE OF CLASSES | TRANSIT | UNIVERSITY HOMEPAGE | ARCHIVE | COLLEGES AND SCHOOLS | FACULTY LIST

UNDERGRADUATE | GRADUATE | VETERINARY MEDICINE | A-Z COURSES | REGISTRATION AND POLICIES | INDEX

**Apply Now »**

## Undergraduate Majors, Minors, Certificates

HOME > UNDERGRADUATE MAJORS, MINORS, CERTIFICATES

- » [Accounting, B.S.](#)
- » [Advertising, B.A.](#)
- » [Aerospace Engineering, B.S.](#)
- » [Agricultural and Life Sciences Education, B.S.](#)
- » [Agricultural Biochemistry, B.S.](#)
- » [Agricultural Business, B.S.](#)
- » [Agricultural Engineering, B.S.](#)
- » [Agricultural Studies, B.S.](#)
- » [Agricultural Systems Technology, B.S.](#)
- » [Agriculture and Life Sciences Education](#)
- » [Agriculture and Society](#)
- » [Agronomy, B.S.](#)
- » [Animal Ecology, B.S.](#)
- » [Animal Science, B.S.](#)
- » [Anthropology, B.A., B.S.](#)
- » [Applied Merchandising, Design, B.S.](#)

**Majors »**


**Minors »**

**Certificates »**

**Preprofessional Study »**

# Bachelor's Degree: Example

## Prerequisites



**FINANCE**  
[for students entering program in Fall 2016]

03/14/2016  
Undergraduate Programs Office  
460 TNRB, Provo, UT 84602  
(801) 422-4285  
msm\_advisement@byu.edu  
msm.byu.edu

**BEFORE APPLYING**

<b>ACC 200*</b> Principles of Accounting FWSp 3.0	<b>BUS M 241</b> Marketing Management FWSpSu 3.0	<b>IS 110</b> Spreadsheets and Business Analysis FWSpSu 1.0  <small>RECOMMENDED TO TAKE BEFORE APPLYING, BUT NOT CALCULATED IN PREREQUISITE GPA.</small>
<b>FIN 201</b> Principles of Finance FWSp 3.0	<b>ECON 110*</b> Economic Problems and Principles FWSpSu 3.0	
<b>MATH 118*</b> Finite Mathematics FWSpSu 3.0		

All prerequisite courses must be completed before the application deadline.  
\*Also counts for a GE

[

APPLY

By last business day of June at 4:30 MDT

[msm.byu.edu/apply](http://msm.byu.edu/apply)

]

**APPLICATION CRITERIA**

1. Prerequisite GPA
  - >> Minimum 3.0 GPA in the prerequisite courses.
  - >> Prerequisite courses must be completed BEFORE the application deadline.
  - >> Transferred prerequisite courses are discounted .3 for this calculation (e.g., A to A-).
  - >> Repeated prerequisite courses are discounted .3 (No more than one repeat per class).
2. BYU / Overall GPA
  - >> Transfer students must complete one semester at BYU before applying.
3. Essay
  - >> Prepare an essay explaining how getting a degree in finance will help you achieve your personal and career goals, why you believe you will succeed in the program, and what you are doing right now to prepare for your future.
4. Résumé

This is a limited-enrollment program. Entry is competitive. Not every student meeting the minimum criteria is guaranteed acceptance into the program.

## Requirements

**FINANCE**  
[for students entering program in Fall 2016]

**TAKE BEFORE OR AFTER APPLYING**

<b>M COM 320*</b> Communication in Organizational Settings FWSpSu 3.0	<b>IS 201</b> Intro. to Management Information Systems FWSpSu 3.0	<b>MATH 116</b> Essentials of Calculus FWSpSu 1.0 <small>RECOMMENDED TO TAKE BEFORE JUNIOR CORE</small>	<b>STAT 121*</b> Principles of Statistics FWSpSu 3.0
<b>ACC 241</b> Business Law FWSpSu 3.0	Complete <b>one</b> lecture series course: BUS M 371R Entrepreneurship Lecture Series BUS M 380 Executive Lecture Series FWSp 1.0		<small>*Also counts for a GE</small>

**JUNIOR CORE [MUST COMPLETE DURING FIRST YEAR IN THE PROGRAM]**

<b>FIN 401</b> Advanced Financial Management F 3.0	<b>FIN 410</b> Investments F 3.0	<b>FIN 453</b> Money, Banking, and Business F 3.0	<b>FIN 320</b> Career Preparation F 0.5
<b>FIN 411</b> Financial Derivatives W 3.0	<b>ACC 305</b> Principles of Accounting II W 3.0	<b>FIN 321</b> Mentor Program W 0.5	<b>RECOMMENDED:</b> On-Campus Internship Corporate: BUS M 494R Real Estate: BUS M 496R Banking: FIN 487

**MANAGEMENT CORE**

<b>ORG B 321</b> Organizational Effectiveness FWSp 3.0	<b>BUS M 361</b> Operations Management FWSu 3.0	<b>BUS M 390</b> Ethics for Management FWSp 3.0	<b>BUS M 487</b> Strategy and Economics FW 3.0
--	---	---	--

**SENIOR ELECTIVES**

Complete **two** electives. Recommended tracks listed below:

Consulting	FIN 417 (W)	BUS M 498 (FW)		
Corporate Finance	FIN 417 (W)	FIN 432 (FW)	MBA 521 (W)	ACC 440 (W)
Equity	FIN 409 (W)	FIN 415 (1.5 Fall and Winter)	ACC 440 (W)	
Fixed Income	FIN 417 (W)	FIN 420 (W)	ACC 440 (W)	
Investment Banking	FIN 417 (W)	ACC 440 (W)		
Real Estate	FIN 413 (FW)	FIN 414 (Not currently offered)		

MSM PROGRAMS | GPA REQUIREMENT FOR GRADUATION: MAJOR: 2.25 OVERALL: 2.00 | TOTAL CREDIT HOURS 64.0

# MS/MSc/MA – Masters Degree

## ■ Description:

- *Referred to as “postgraduate degree”*
- *More advanced than Bachelor’s Degree*
- *Builds concepts learned during Bachelor’s Degree coursework*
- *Normally includes a research component; sometimes requires student’s to submit a thesis*

## ■ Length:

- *Appx. 2 -3 years*
- *Appx. 5 classes/semester (lectures are held about 2 times/week)*

## ■ Requirements:

- *GRE Exam; TOEFL*
- *Bachelor’s Degree*
- *Each degree has its own list of required classes*
- *You can find degree requirements in a **University Catalog** or **Department Website***

## ■ Employment Relevance:

- *Masters Degrees can lead to high-paying jobs*
- *You need a Masters Degree in order to be competitive for senior-level positions in the USA*
- *The number/quality of opportunities available depend on your degree area*
- **Careful!:** *Make sure you understand the employment options related to your degree before committing*
- **Careful!:** *In your specific case, the benefits of a Master’s Degree may not be worth the time/cost/effort*
- **Careful!:** *Make sure that companies know you are an international student!*

# MBA/JD/MD– Other Degrees

## ■ Description:

- *Accept applicants from a wide variety of backgrounds*
- *MBA – Masters in Business Administration : Preparation for management/finance jobs*
- *JD – Juris Doctor: Preparation for legal jobs*
- *MD – Medicinae Doctor: Preparation for career as a medical doctor*

## ■ Length:

- *MBA/JD – 3 years*
- *MD – 4 years*

## ■ Requirements:

- *TOEFL*
- *Bachelor's Degree*
- *MBA: GMAT Exam*
- *JD: LSAT Exam*
- *MD: MCAT Exam ; Science classes during Bachelor's degree*

## ■ Employment Relevance:

- *MBA/JD/MD programs vary widely in quality and cost ; Study your options before applying*
- *These programs are competitive; the earlier you can prepare, the better*
- **Careful!** *Expensive programs aren't necessarily better*

# PhD – Doctorate Degree

## ■ Description:

- *Most advanced academic degree available*
- *Advanced coursework (learn how to design, run, and analyze academic studies)*
- *Thesis project – original research, appx. 150 – 400 pages*

## ■ Length:

- *Appx. 4 years*

## ■ Requirements:

- *Bachelor's Degree*
- *GMAT/GRE Exam ; TOEFL*

## ■ Employment Relevance:

- *On average, PhD's obtain the highest-paying jobs*
- *Job options vary based on your area of study and PhD program*
- *A PhD is required to teach as a college/university professor*
- *PhD programs are extremely competitive (less than 10% of applicants are accepted)*

# Which Educational Institution is Right for Me?

- Technical/Trade School



- Two-Year College / Community College



- Four-Year College/University



- Adult High School





# Adult High School



- **Description:**
  - Offer USA High School Degrees
- **Length:**
  - 1 year – 18 months
- **Cost (Annual):**
  - < \$1,000
- **Employment Relevance:**
  - On their own, high school degrees provide few job opportunities
  - However, earning a USA high school degree can make it easier to apply for college/trade schools
  - Many Latinos use time at Adult High School to prepare for higher education:
    - Improve English Skills
    - Adjust to a new culture
    - Learn how to prepare for American exams
    - Prepare for the TOEFL/SAT/ACT

# Technical/Trade Schools



- **Description:**
  - Provide certification in specific skill/profession
  - Examples: Secretary, Culinary Arts, Information Technology, Auto Mechanics
- **Living:**
  - You live away from campus
- **Length:**
  - 6 months – 1 Year
- **Cost (Full Program):**
  - \$5,000 - \$20,000
  - Programs that train you in high-paying jobs will cost more
- **Employment Relevance:**
  - Low job competition; low/medium pay (See professions above)
- **Requirements:**
  - Low – It's very easy to enter. Some Technical Schools require the TOEFL, but you don't need a high score
  - It is important to note, however, that applying may be difficult because technical schools aren't accustomed to international students

# *Two-year/Community Colleges ( Associates Degree)*



- A school offering two year programs (Associates Degrees)
- Often called a “ Junior College” or a “Community College”
- Have fewer requirements for entry

## About Two-Year Colleges

- Cheaper and faster, two-year schools offer students the opportunity to finish 4-year degrees with little or no debt.
- You can also use a two-year school as a point of departure for a technical certification/license

## Why you would attend:

- You want to lower costs of a 4-year education
- You want to prepare for a technical/trade

# Two-Year/Community College



- **Description:**
  - Provide academic training up to the **Associate** level
  - After 2 years, you can transfer to a 4-year university (if you apply and are accepted)
- **Living:**
  - You live away from Campus
- **Length:**
  - 2 Years
- **Cost (2 Years):**
  - \$5,000 – \$15,000
  - One of the best reasons to consider Community College is the money you save
- **Employment Relevance:**
  - Some Community Colleges offer technical schools, but most focus on Associates degrees.
  - On it's own, an Associates degree won't help you get a job.
  - However, you can earn a Bachelor's Degree with just 2 more years of school!
- **Requirements:**
  - TOEFL: You must take the test, But you don't need a high score
  - High School Degree

# *Four-Year Colleges/University ( Bachelor's Degree)*

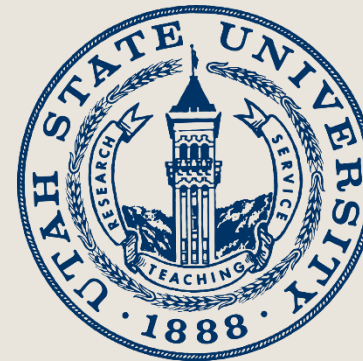
- Equivalent of “licentiatura”
- Essential degree for most US jobs
- If you plan to continue your education with a Master's Degree, you must first obtain the appropriate degree from a 4-year university
- Most 4-year universities offer programs that help you learn about postgraduate opportunities before you apply.





# *Universities and Colleges*

- In comparison with colleges, universities have a more diverse class offering due to a larger quantity of enrolled students
- A University is an institution that offers Bachelor's and Postgraduate (Masters/Doctorate) degrees.
- Some universities have Law and/or Medical schools.



## About 4-year Colleges and Universities:

- A 4-year university program leads to a degree in a specific área of study.
- Students pursue a degree in preparation for a profession, postgraduate studies, or both.

## Bachelor's Degree Types

- Bachelor of Arts (B.A.) – Qualitative majors such as English, Drama, and Philosophy
- Bachelor of Science (B.S.) – Quantitative majors such as Finance, Engineering, and Math



# Four-Year Colleges/Universities



## ■ Description:

– Offer a number of full degree programs:

- Bachelors Degree (B.S., B.A. Bsc, etc.)
- Minors
- Masters Degree (MA, MS, Msc, etc.)
- Doctorate Degree (PhD)

## ■ Length:

- Bachelors: 4 Years (2 Years if you transfer from a community college)
- Masters: 2-3 Years, Depending on the program
- Doctorate: 4 Years

## ■ Cost (Annual):

- \$15,000 - \$50,000

# Four-Year Colleges/Universities (Cont.)



## ■ Competition

- Not all Universities are difficult to enter; some are very competitive
- Some Universities admit as many as 75% of applicants
- Elite Universities admit as few as 5% of applicants

## ■ Requirements:

- TOEFL, SAT or ACT, SAT subject tests (sometimes), Application
- Competitive schools require higher test scores and stronger applications

## ■ Employment Relevance:

- Generally, competitive Universities provide better job opportunities
- However, Employment opportunities vary based on degree
- Competitive jobs require a University degree, but a University degree does not guarantee you a competitive job
- In addition to a degree, obtaining a job requires **Networking** and **Internships** (discussed later)
- In some campos del trabajo, you may need a Masters or Doctorate degree in order to obtain a job

# University Programs - Examples

Accounting (BS) \*  
 Acting (BFA) \*  
 Actuarial Science (BS)  
 American Studies (BA)  
 Ancient Near Eastern Studies: Greek New Testament (BA)  
 Ancient Near Eastern Studies: Hebrew Bible (BA)  
 Animation (BFA) \*  
 Anthropology (Sociocultrl Double Major) (BA)  
 Anthropology: Archaeology (BA)  
 Anthropology: Sociocultural (BA)  
 Applied Physics (BS)  
 Arabic Language (BA)  
 Art (BFA) \*  
 Art (BA) \*  
 Art Education K-12 (BA) \*  
 Art History & Curatorial Studies (BA)  
 Asian Studies: China Studies (BA)  
 Asian Studies: Japan Studies (BA)  
 Asian Studies: Korea Studies (BA)  
 Athletic Training (BS)

**Biochemistry (BS)**  
**Biodiversity & Conservation (BS)**  
**Bioinformatics (BS)**  
**Biological Science Education (BS)**  
**Biology (BS)**  
**Biophysics (BS)**

Chemical Engineering (BS)  
 Chemistry (BS)  
 Chemistry (BA)  
 Chemistry Education (BS)  
 Chinese (BA)  
 Civil Engineering (BS)  
 Classical Studies: Classical Civilization (BA)  
 Classical Studies: Classics (BA)  
 Classical Studies: Greek Emphasis (BA)  
 Classical Studies: Latin Emphasis (BA)  
 Commercial Music (BM) \*  
 Communication Disorders (BS) \*  
 Communications: Advertising (BA) \*  
 Communications: News Media (BA) \*  
 Communications: Public Relations (BA) \*  
 Comparative Literature (BA)  
 Computer Engineering (BS)  
 Computer Science (BS)  
 Computer Science: Animation (BS) \*  
 Computer Science: Bioinformatics (BS)  
 Construction and Facilities Management: Construction Management (BS)  
 Construction and Facilities Management: Facilities Management (BS)

Dance (BA) \*  
 Dance (BFA) \*  
 Dance Education K-12 (BA) \*  
 Design: Graphic Design (BA) \*  
 Design: Illustration (BA) \*  
 Design: Photography (BA) \*  
 Dietetics (BS) \*

**Neuroscience (BS)**  
**Nursing (BS) \***  
**Nutritional Science (BS)**

**Early Childhood Education (BS)**  
**Earth & Space Science Education (BS)**  
**Economics (BS)**  
**Electrical Engineering (BS)**  
**Elementary Education (BS)**  
**English (BA)**  
**English Language (BA)**  
**English Teaching (BA)**  
**Environmental Science (BS)**  
**European Studies (BA)**  
**Exercise & Wellness (BS)**  
**Exercise Science (BS)**

Philosophy (BA)  
 Photography (BFA) \*  
 Physical Education Tchg/Coaching (K-12) (BS)  
 Physics (BS)  
 Physics Teaching (BS)  
 Physics-Astronomy (BS)  
 Physiology & Developmental Biology (BS)  
 Political Science (BA)  
 Portuguese (BA)  
 Portuguese Studies (Secondary Major) (BA)  
 Psychology (BS)  
 Public Health: Environmental/Occupational Health (BS)  
 Public Health: Epidemiology (BS)  
 Public Health: Health Promotion (BS)  
 Public Health: Health Science (BS)

# *Schools vs. Colleges*

- A College and University are equal academically
- The best school for your depends on your needs.



# CONEXIONES

## *Foundation Courses*

### *MODULE 1 – “INTRODUCTION: WHAT ARE MY OPTIONS?”*

---